

T ANCHOR

T-Anchor	Part No.	Min Panel Thickness	Min Edge or Corner Distance	SWL	
				Shear	Tension
2T x 4"	HMY110	4-3/4"	8"	4,000 lbs.	4,000 lbs.
2T x 5-1/2"	HMY059	5-7/8"	11"	4,000 lbs.	4,000 lbs.
4T x 4-1/4"	HMY848	4-5/8"	8-1/2"	5,500 lbs.	5,500 lbs.
4T x 4-3/4"	HMY849	5-1/8"	9-1/2"	7,100 lbs.	7,100 lbs.
4T x 5-1/4"	HMY850	5-5/8"	10-1/2"	8,000 lbs.	8,000 lbs.
4T x 5-3/4"	HMY851	6-1/8"	11-1/2"	8,000 lbs.	8,000 lbs.
4T x 6-1/4"	HMY852	6-5/8"	12-1/2"	8,000 lbs.	8,000 lbs.
4T x 6-3/4"	HMY853	7-1/8"	13-1/2"	8,000 lbs.	8,000 lbs.
4 x 7-1/4"	HMY854	7-5/8"	14-1/2"	8,000 lbs.	8,000 lbs.
4T x 7-3/4"	HMY855	8-1/8"	15-1/2"	8,000 lbs.	8,000 lbs.
6T x 11-1/8"	HMY319	11-1/2"	23"	12,000 lbs.	12,000 lbs.
8T x 6-1/8"	HMY055	6-1/8"	12-1/4"	7,950 lbs.	7,950 lbs.
8T x 11-1/8"	HMY119	11-1/2"	23"	16,000 lbs.	16,000 lbs.

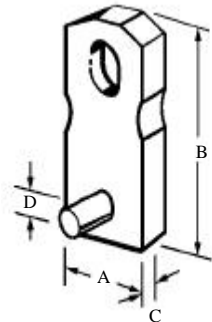
1) Safe Working Load provides a factor of safety of approximately 4 to 1 in 3,500 psi normal weight concrete.

2) Side notches are provided on 4-ton T-Anchors only.

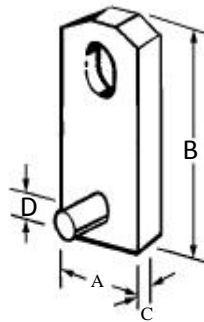
3) No side notches are provided on 2, 6 and 8-ton T-Anchors.

4) Both HDG and plain finish are available.

Part No.	A	B	C	D
HMY110	1-1/4"	4"	3/8"	1/2"
HMY059	1-1/4"	5-1/2"	3/8"	1/2"
HMY848	1-1/2"	4-1/4"	5/8"	1/2"
HMY849	1-1/2"	4-3/4"	5/8"	1/2"
HMY850	1-1/2"	5-1/4"	5/8"	1/2"
HMY851	1-1/2"	5-3/4"	5/8"	1/2"
HMY852	1-1/2"	6-1/4"	5/8"	1/2"
HMY853	1-1/2"	6-3/4"	5/8"	1/2"
HMY854	1-1/2"	7-1/4"	5/8"	1/2"
HMY855	1-1/2"	7-3/4"	5/8"	1/2"
HMY319	2-1/2"	11-1/8"	5/8"	3/4"
HMY055	2-1/2"	6-1/8"	3/4"	3/4"
HMY119	2-1/2"	11-1/8"	3/4"	3/4"



(4T)



(2T/6T/8T)

